

JMB-S/S+

HOT WATER HIGH PRESSURE CLEANER ON TRAILER OR BUILT-IN CONFIGURATION

The DiBO JMB-S is an ultra-compact mobile hot water high pressure cleaner on a trailer with attractive appearance and equipped inside with the latest and greenest technologies. With its own power source and independent operation, also for use in places where no electricity supply is available.

With the option of cleaning with cold or hot water at high pressure, this high pressure cleaner is suitable for a wide variety of cleaning work.

A low center of gravity in the middle at the axle ensures optimum load distribution, that together with the weight of <750 kg results in a highly comfortable drive. No special driver's license is required to pull this trailer.

Besides the standard version, this JMB-S high pressure trailer is also available as a full option "+" version.

The JMB-S+ version includes:

- Electronic level indication for fuel and water tank
- Electronic gas regulation with automatic speed control


GreenBoiler

70 kW

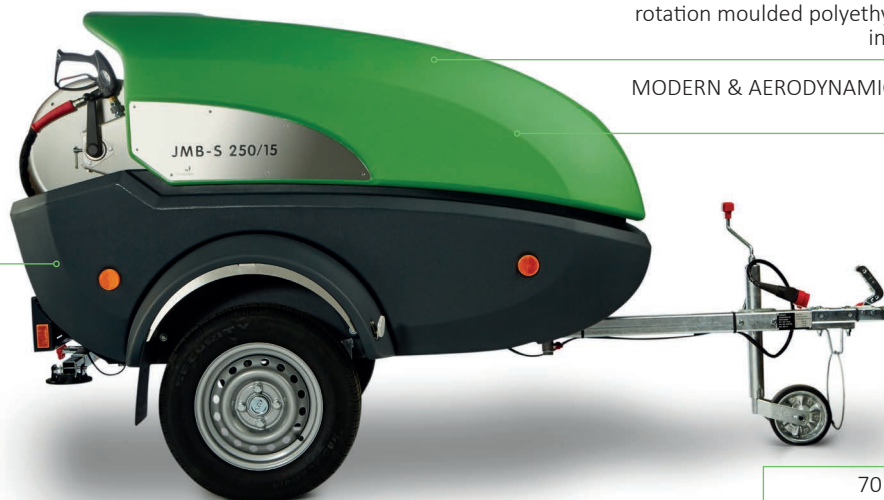
- GreenBoiler for a greater efficiency >92%
- 18% fuel saving
- Low CO₂ emission
- Low maintenance cost

UV-resistant DOUBLE-WALLED housing in rotation moulded polyethylene >>> sound insulated: < 85 dB

MODERN & AERODYNAMIC design for less air resistance

ULTRA-COMPACT AND LIGHTWEIGHT trailer

<750 kg (no special driver's license required)



STANDARD ACCESSORIES :

70 kW GreenBoiler
+ 20 kW Intercooling

90 kW HEATING POWER



Built-in hose reels with 40 m high pressure hose 3/8"



Single stainless steel lance with high pressure nozzle and rotating quick coupling
code : 1.216.729.xxxx (≤ 250 bar)



High pressure gun with swivel
code : 1.211.5xx



All engines comply with the latest emission standard

Operating panel with digital display and joystick



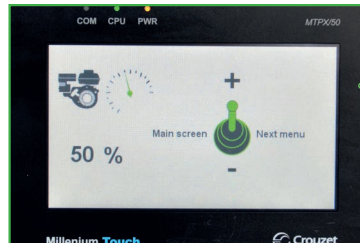
All functionality needed for the high pressure activities are brought together on the rear of the machine- everything within hand reach.
Can be operated with gloves.



Digital operation with joystick.

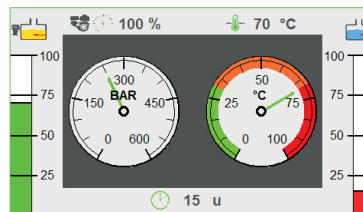
EASY TO OPERATE:

Low voltage (12V) for the electronic control and for the burner >>> safety



Electronic setting of the temperature (exact & constant).

Electronic control with pressure gauge, hour counter, maintenance information, error messages and device functions that facilitate maintenance.



Digital display with pressure gauge, temperature gauge, hour counter, maintenance info, failure and alarm messages and service functions to facilitate maintenance.

TECHNICAL SPECIFICATIONS :

- Industrial diesel engine with preheating of the water in the tank via heat exchanger. This saves up 15 % fuel for the burner
- 33 % total fuel saving by combining GreenBoiler and heat exchanger
- Radial high pressure pump with 3 ceramic plungers and stainless steel valves
- 70 kW GreenBoiler + 20 kW Intercooling = 90 kW heating capacity
- 12 V operating voltage for electronic control and for the burner
- Diesel boiler with independent motor fitted and fuel valve with electronic ignition
- Pressure reduction up to <25 bar with sealed gun
- Washable water filter
- Run dry protection on water and fuel tank
- Auto-stop system stops the engine after 30 min. without spraying activity
- Trailer version: galvanized trailer fitted with support and swivel wheel with rotation casted polyethylene housing (light- weight)
- Prepared for a specially cushioned axle (in line with German law)
- Automatic pre-glowing
- 200 l built-in water tank (only for TG version)
- Pressure and flow regulation via speed engine governor (manually (standard) or electronically ("+"-version))
- Digital control and reporting on display of :
 - motor functions
 - flame monitoring
 - water level (*)
 - fuel level (*)
- Automatic idling (*)

Note: (*) = only at "+"-version

JMB-S/S+

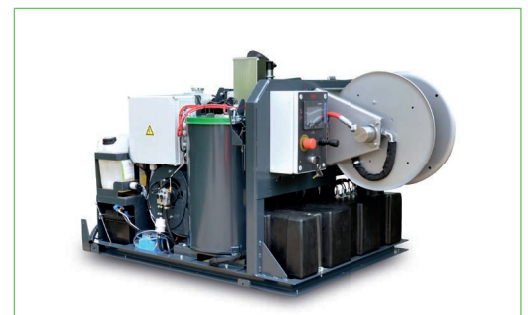
MODELS :

JMB-S/S+												
TYPE	bar	l/h	°C	kW	kW	l	l	mm	kg			
												OUTPUT
1.128.360	JMB-S 200/18 T	200	1080	30 - 100	11,7 (Diesel)	70	50	200	2665 x 1559 x 1354	700	055	■
1.128.361	JMB-S+ 200/18 T	200	1080	30 - 100	11,7 (Diesel)	70	50	200	2665 x 1559 x 1354	700	055	■
1.128.350	JMB-S 200/18 I	200	1080	30 - 100	11,7 (Diesel)	70	50	-	1575 x 920 x 865	450	055	■
1.128.351	JMB-S+ 200/18 I	200	1080	30 - 100	11,7 (Diesel)	70	50	-	1575 x 920 x 865	450	055	■
1.128.355	JMB-S 200/18 S	200	1080	30 - 100	11,7 (Diesel)	70	50	200	1927 x 1198 x 1095	630	055	■
1.128.356	JMB-S+ 200/18 S	200	1080	30 - 100	11,7 (Diesel)	70	50	200	1927 x 1198 x 1095	630	055	■
1.128.510	JMB-S 250/15 T	250	900	30 - 100	11,7 (Diesel)	70	50	200	2665 x 1559 x 1354	700	040	■
1.128.511	JMB-S+ 250/15 T	250	900	30 - 100	11,7 (Diesel)	70	50	200	2665 x 1559 x 1354	700	040	■
1.128.500	JMB-S 250/15 I	250	900	30 - 100	11,7 (Diesel)	70	50	-	1575 x 920 x 865	450	040	■
1.128.501	JMB-S+ 250/15 I	250	900	30 - 100	11,7 (Diesel)	70	50	-	1575 x 920 x 865	450	040	■
1.128.505	JMB-S 250/15 S	250	900	30 - 100	11,7 (Diesel)	70	50	200	1927 x 1198 x 1095	630	040	■
1.128.506	JMB-S+ 250/15 S	250	900	30 - 100	11,7 (Diesel)	70	50	200	1927 x 1198 x 1095	630	040	■

T = Unbraked trailer, S= Skid version, I = Built-in configuration



SKID CONFIGURATION
provided to be picked up by forklift



BUILT-IN CONFIGURATION
for installation in van or truck



Steam lance
code: 1.230.18x



Light package: work light and beacon:
adjustable via joystick
code: 1.228.240



OPTIONAL ACCESSORIES :

The DiBO JMB-S/S+ can optionally be equipped with the following :

- Various colors are available on request
- Steamfunction at 140° C (30 bar). This includes a valve for the steam function, a high pressure hose with thermal protection, a high pressure pistol, a separate lance and steam nozzle.
- Anti-scaling system (by dosing pump on flow).
- Track & Trace system, including information on
 - Working hours burner & machine
 - Errors visible from a distance
 - Location of the machine
 - Location history
 - Error messages history

NOTE: It's recommended to always order the anti-scaling option together with the steamfunction for the protection of the coil.

JMB-S/S+



1.230.160	Supplement for steam function 140° C (30 bar)- valve, hp hose with thermal protection, pistol, lance and steam nozzle included
1.230.051	Supplement for anti-scaling system by dosing pump on flow (level detection)
1.230.212	Supplement for detergent injector, with separate ball valve to choose option "chemicals" or "rinsing"
1.228.950	Supplement for lifting system
1.228.290	Supplement for a 12 V self-priming pump for connection to an external water tank (max. 10 l/min)
1.230.18x	**Steam lance (Note : Please always indicate when ordering the working pressure of the JMB-S/S+)
1.228.240	Light package: work light and beacon adjustable with joystick
1.228.200	Tarpaulin (cover back for hose-reels and manual operating-panel)
1.228.150	Track & Trace system